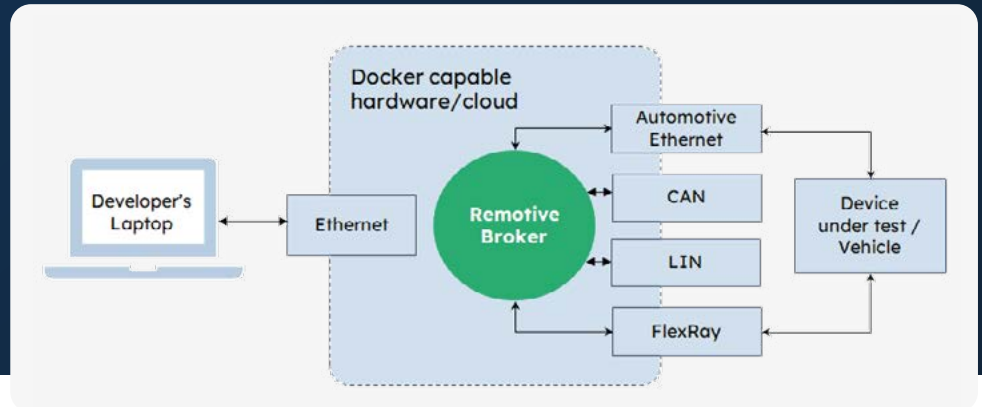


# Empowering automotive developers by providing modern, lightweight and easy-to-use tooling

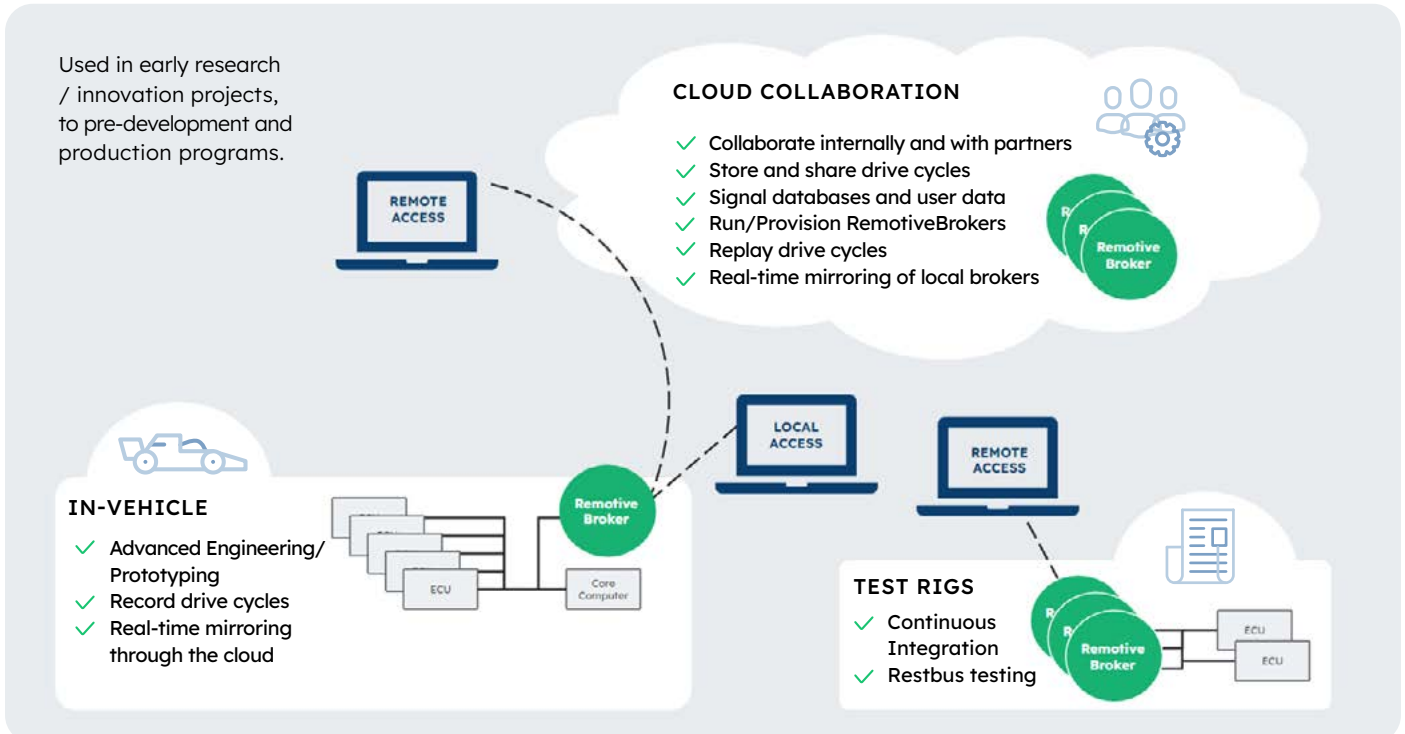
Flexible tools make it a lot easier to build and test software for vehicles that don't exist yet!

The core of the RemotiveLabs platform is the RemotiveBroker >>



- ✓ **Supports gRPC** - Use the programming language of your choice including Python, Rust, C++ etc.
- ✓ **Supports automotive protocols** - CAN (.dbc), SocketCAN, FlexRay (fibex /arxml), LIN (.ldf), UDP arxml, LDF.
- ✓ **Record and Playback** - Easy to record signals - replay locally or in the cloud
- ✓ **Remote access** - Access the product from anywhere over the Internet

## Platform architecture



### Use the hardware of your choice

Our RemotiveBroker can run on the hardware of your choice including RaspberryPi or any Linux/Docker based HW. Find a growing [list of reference kits](#) on our website and a [guide on how to install RemotiveBroker](#) on our documentations page. Host Mobility offers two popular automotive grade hardware alternatives that are available preconfigured with our software - see page 2.

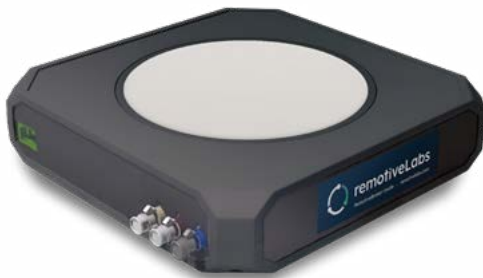
# Automotive grade telematics computers preconfigured with our software

**HOST** | Mobility

A Host Mobility reference kit preconfigured with RemotiveLabs software image is an easy and fast way to get started with your RemotiveBroker.

Host Mobility **HMX** — RemotiveLabs preconfigured

*The next generation telematics computer for modern automotive development.*



- 1.6 Ghz CPU Quad core, 64 bit, 800MHz real-time co-processor
- 4 GB RAM
- 4G/LTE or 5G, Wi-Fi
- 6x CAN-FD
- 2x Automotive Ethernet (100/1000BASE-T1)
- Linux, with root access
- GPS
- Multiple digital I/O up to 1.5 Amp



Price: € 895 ex VAT. [Contact HostMobility for orders.](#)

Host Mobility **MX-4 T30 FR** — RemotiveLabs preconfigured

*Telematics computer with an impressive range of automotive communication interfaces.*



- 1.4 GHz CPU Quad core
- 1 GB RAM
- 4G/LTE modem, Wi-Fi
- 6x CAN 2.0 B
- 2x Ethernet
- Linux, with root access
- GPS
- 6x Digital I/O, 2x Analog In
- 2x LIN
- Flexray



Price: € 895 ex VAT. [Contact HostMobility for orders.](#)

More details on HMX and MX4-T30-FR available through [hostmobility-eng.setek.se](http://hostmobility-eng.setek.se). Note that in addition to the pre-configured hardware, a valid RemotiveLabs license is required to run the RemotiveBroker (2,500 Euro / year for a single hardware licence). If your company does not have a framework agreement with RemotiveLabs, you can go directly to the [request a licence](#) step in our GitHub user guide and request an individual license (30 days free trial).