

RemotiveLabs Platform

Speed up vehicle software development & testing with flexible tools

In partnership with

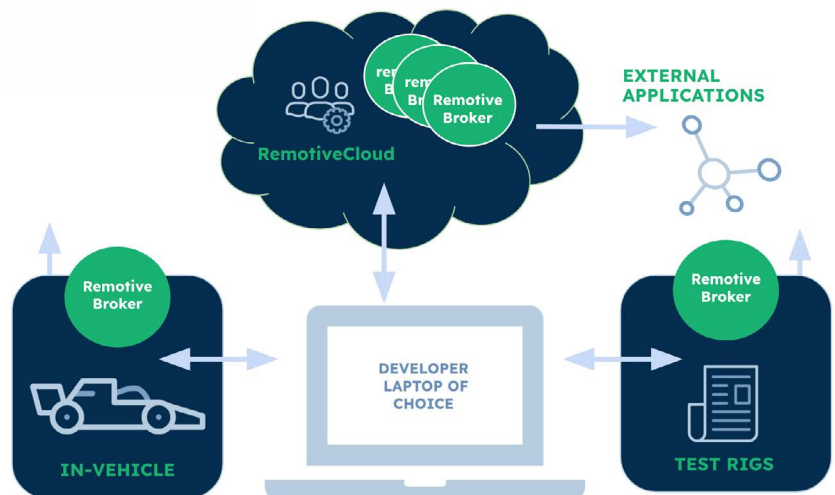


The RemotiveBroker is a modern and easy way to record test drives & expeditions. A lightweight option running on [any Linux/Docker based hardware](#) including a Raspberry Pi.

The core of the platform, the RemotiveBroker, allows reading and writing to vehicles with support for automotive protocols (CAN, LIN, Ethernet etc.). Build scalable, remotely accessible test rigs.

RemotiveCloud is used for replay and sharing of recordings. Easily stream data where you need it.

Operate the platform in web/cloud interface or through the RemotiveCLI.



RemotiveBroker

2500 € / Year licence (runs on HW of your choice)

LOWERING THE THRESHOLD FOR VEHICLE DATA ACCESSIBILITY

The RemotiveBroker is an easy-to-use tool, both in and outside the office. Streamline and simplify analytics with RemotiveBroker:

- Logging data in the vehicle. Ability to ingest data into vehicle / test object.
- Provides real time data via direct IP connection - or remotely via cloud.
- Capability to store data internally if there is no connection, and upload later.

RemotiveCloud

900 € / Year & user (incl. in RemotiveBroker licence)

ENABLES COLLABORATION, SIGNAL VISUALIZATION & ACCESS CONTROL

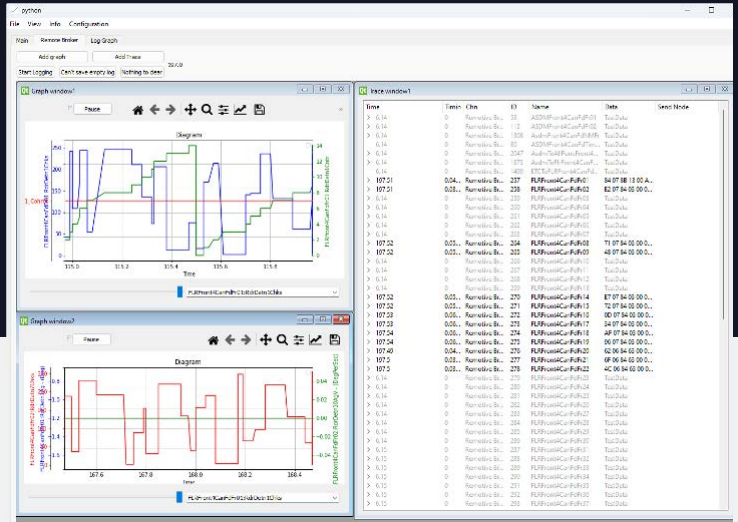
The RemotiveCloud allows you to store data long term & give access to multiple people for various purposes:

- Upload, playback & analyze recordings.
- Transform signals in real time.
- Feed recordings to external applications (ProtoPie, AAOS, Capgemini Vehicle Test Engineer UI etc).

Vehicle Test Engineer UI

Custom vehicle testing interface for monitoring & event analytics

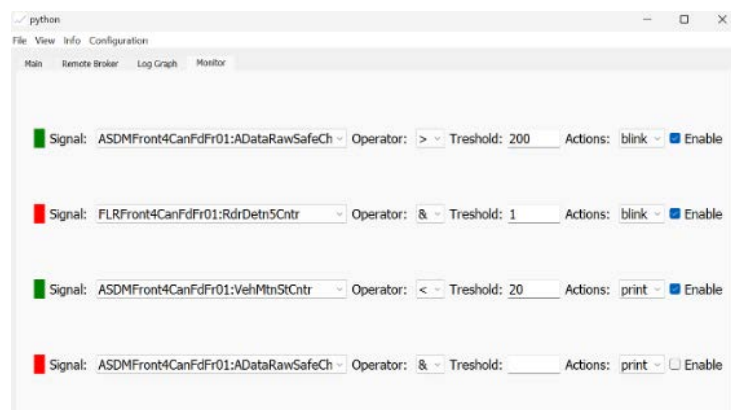
In partnership with



Perfect for autonomous testing & event-based analysis

Capgemini Engineering has developed a user-friendly test data interface building on top of RemotiveLabs modern software tooling:

- Trace window with basic functionalities.
- Combined graphs.
- Logging full communication.
- CAN and CAN FD implemented, LIN and Flexray, Ethernet will be available soon.
- Data monitoring on signal level.
- Flexible interface and ability to add custom feature requirements from test teams.



Capgemini Vehicle Test Engineer UI has been designed for live monitoring of data streams and for triggering recordings based on configurable events.



Shibi Karim
Head of Engineering

Capgemini Engineering Nordics

“RemotiveLabs developer-centric and open platform for vehicle software development and related toolchains is a good compliment to traditional tools in the automotive industry.”

Key use cases for RemotiveLabs lightweight tooling

In prototyping: Up to 6 times faster prototyping with relevant data for first level analysis on functional development. Enabling research and early innovation with high-level mocking of ECU functionality.

For testing & verification: Automate and scale testing and verification as RemotiveLabs easily integrates with existing tooling and CI/CD frameworks. Reduce complexities in tests for component level verification.

Add flexibility when moving from desktop rigs to full HIL rigs and Box-cars etc.

Capgemini is available to support with improving your development flow with test automation, customization and integration of the RemotiveLabs toolchain.



Get the future you want